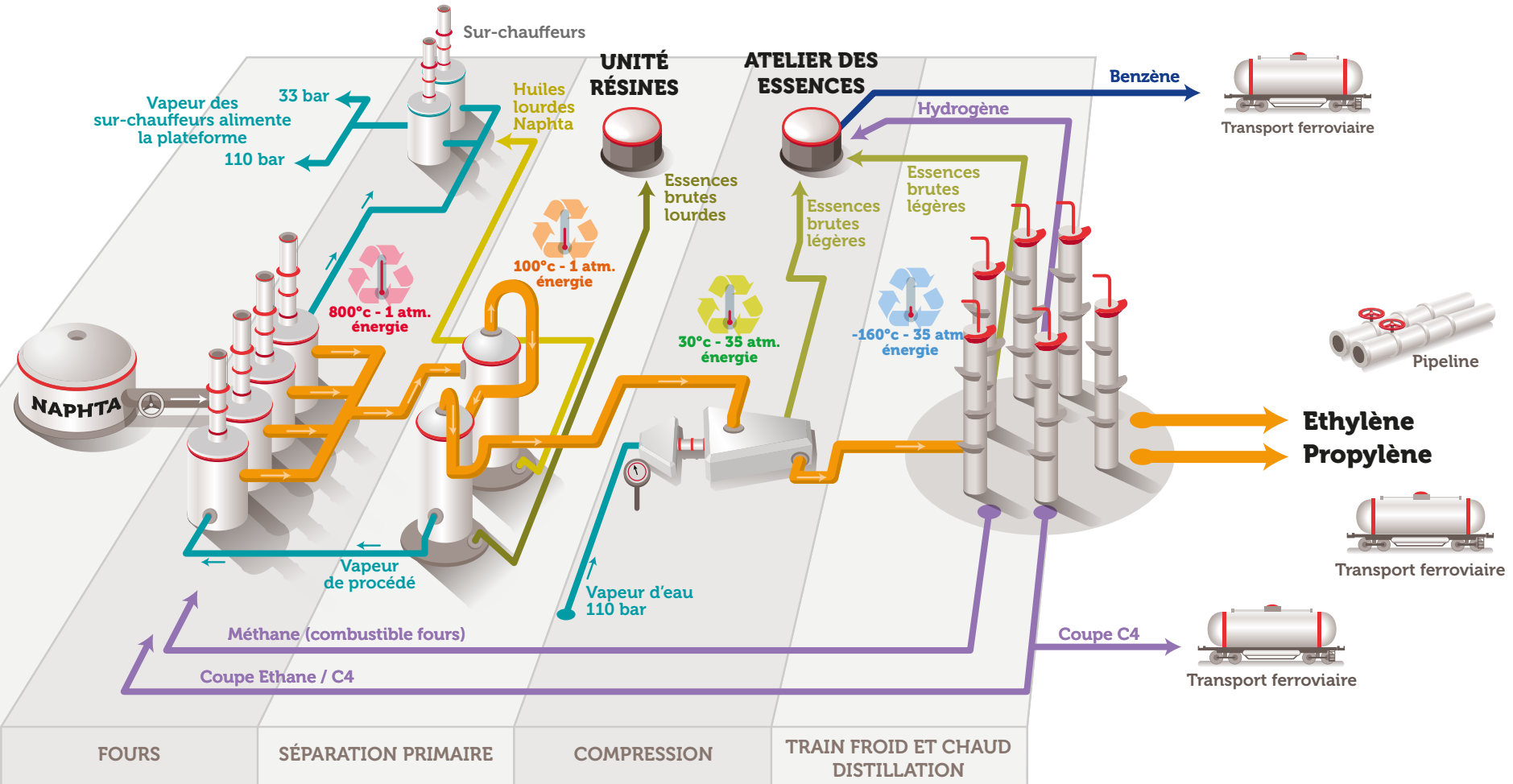
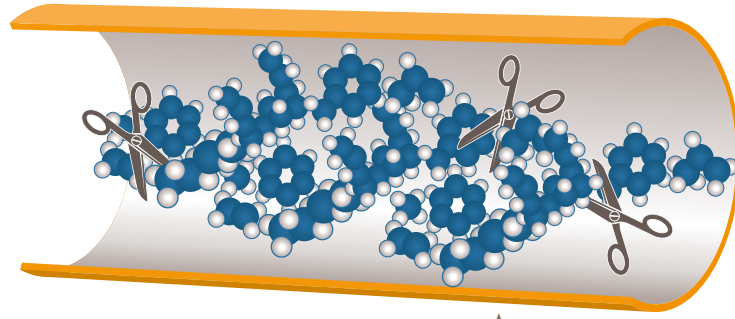


Vapocraqueur

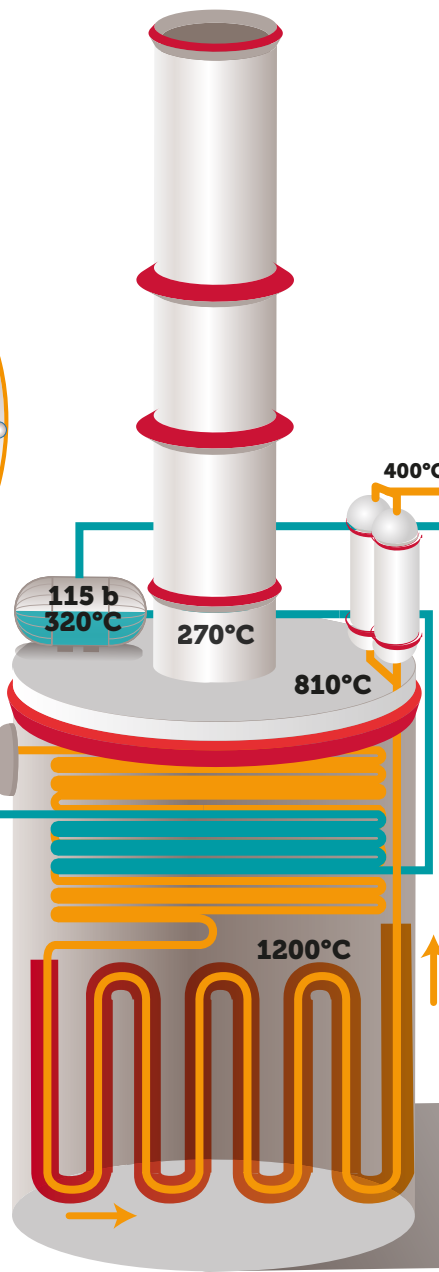


Fours de craquage



NAPHTA
(100°C, 6 b)

Vapeur
de procédé
185°
7 b

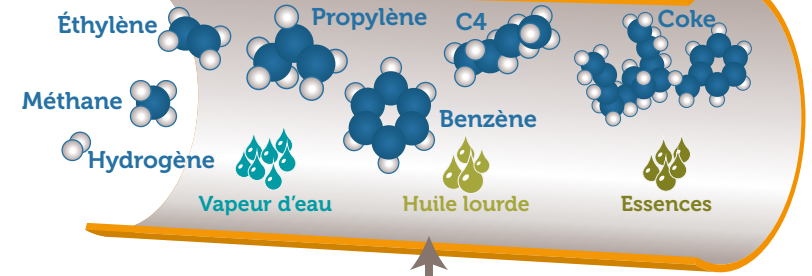


Gaz craqués à la sortie du four

400°C

Vapeur saturée
(vers surchauffeurs)

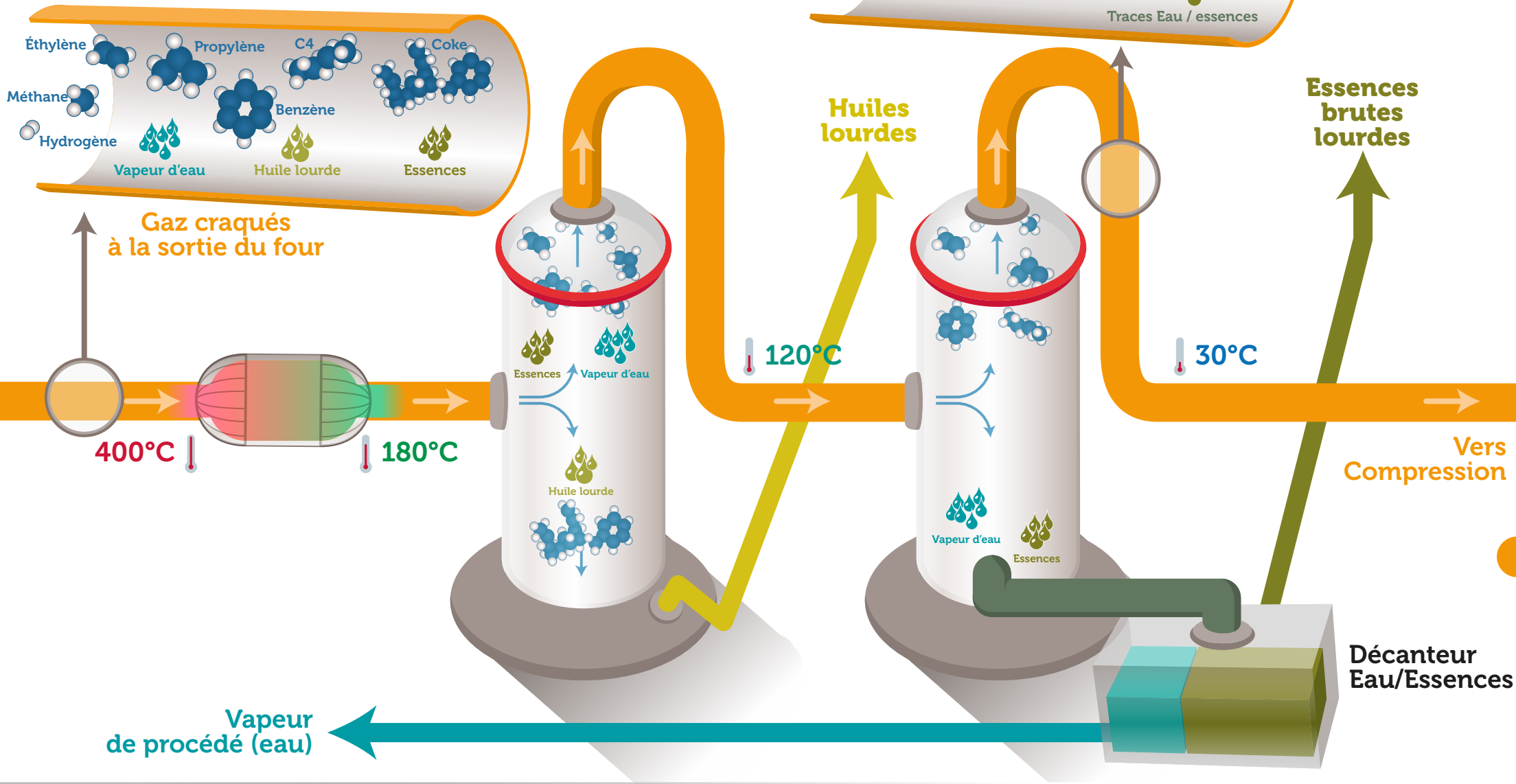
Vers
Séparation primaire



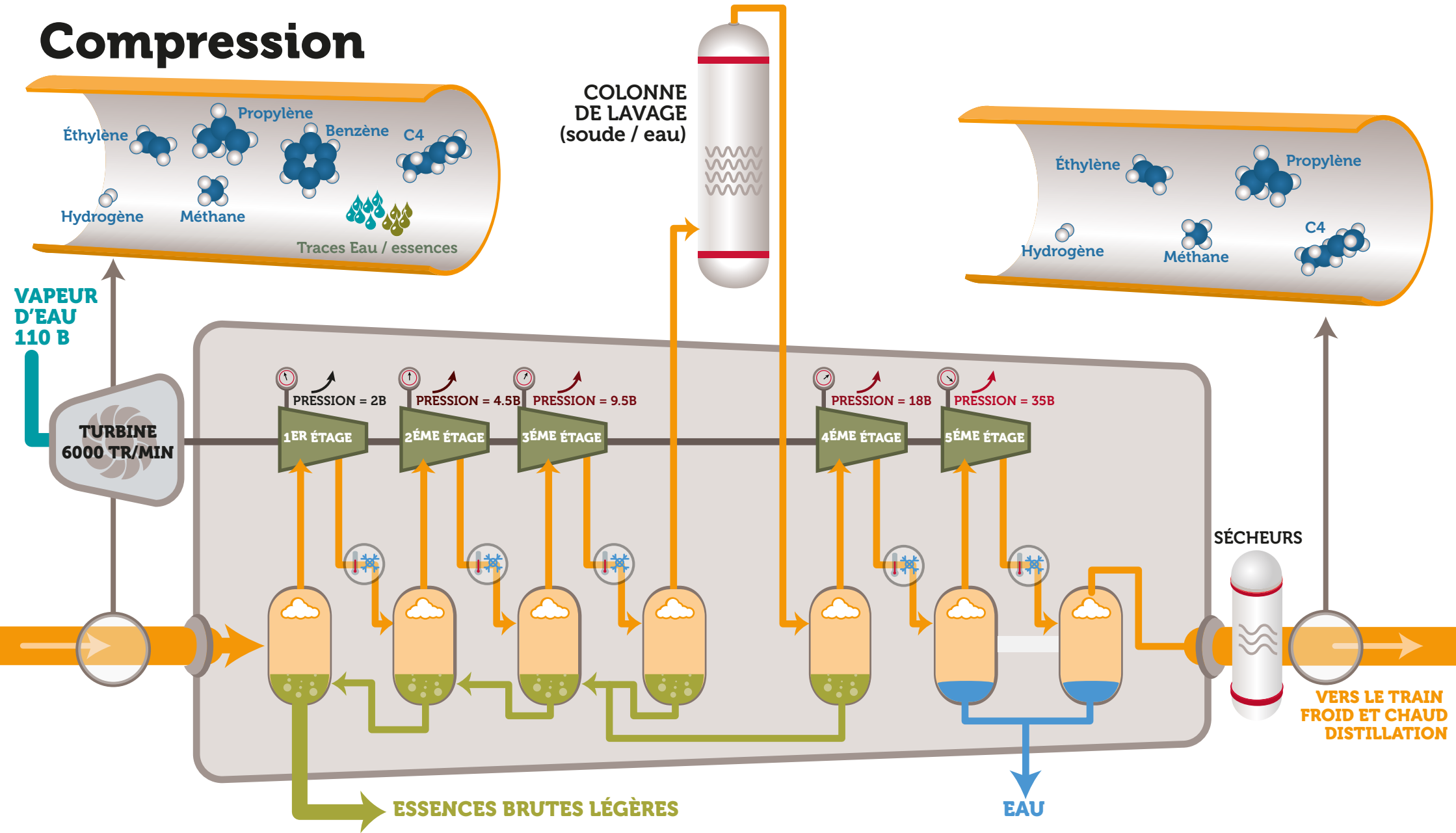
CARACTÉRISTIQUES TECHNIQUES

Rendement thermique ~85%
Temps de séjour radiation 0.6 sec
Métallurgies de tubes rad. : XM
Chauffe sôle/paroi
Température craquage : 790°C à 820°C

Séparation Primaire



Compression



Train froid et chaud - distillation

